

Spanish Fork Zoning Map



1 in = 3,400 ft

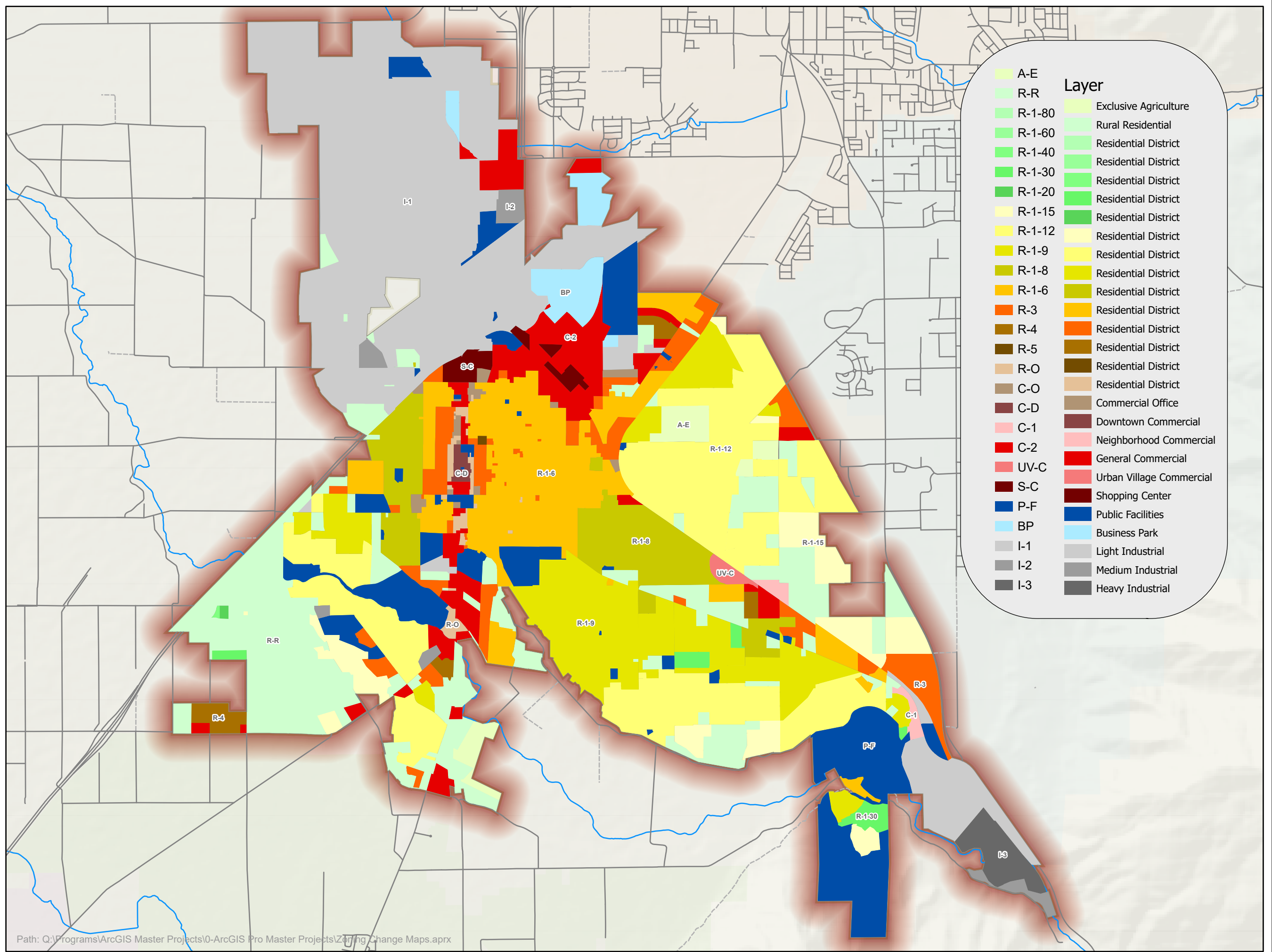


SPANISH FORK
PUBLIC WORKS

Spanish Fork City GIS
40 South Main Street
Spanish Fork, UT 84660
GIS Administrator (801) 804-4571
GIS Interns (801) 804-4572

Disclaimer: Spanish Fork City makes no warranty with respect to the accuracy, completeness, or usefulness of these maps. Spanish Fork City assumes no liability for direct, indirect, special, or consequential damages resulting from the use or misuse of these maps or any of the information contained herein. Portions may be copied for incidental uses, but may not be resold.

Date Printed: 12/8/2022



| Code | Layer |
|--------|--------------------------|
| A-E | Exclusive Agriculture |
| R-R | Rural Residential |
| R-1-80 | Residential District |
| R-1-60 | Residential District |
| R-1-40 | Residential District |
| R-1-30 | Residential District |
| R-1-20 | Residential District |
| R-1-15 | Residential District |
| R-1-12 | Residential District |
| R-1-9 | Residential District |
| R-1-8 | Residential District |
| R-1-6 | Residential District |
| R-3 | Residential District |
| R-4 | Residential District |
| R-5 | Residential District |
| R-O | Residential District |
| C-O | Commercial Office |
| C-D | Downtown Commercial |
| C-1 | Neighborhood Commercial |
| C-2 | General Commercial |
| UV-C | Urban Village Commercial |
| S-C | Shopping Center |
| P-F | Public Facilities |
| BP | Business Park |
| I-1 | Light Industrial |
| I-2 | Medium Industrial |
| I-3 | Heavy Industrial |